

Since 1905

Alsip's

Building Products & Services

HEARTHSIDE

FIREPLACE & STONE GALLERY

Exterior Catalogue
2026





CORONADO[®]
STONE PRODUCTS



Osage Stone - Cape Cod Grey



Osage Stone - Alabaster



White - Pro Ledge



Huron - Pro Ledge



White - 3" Split Limestone

Manufactured Stone Veneer



CORONADO[®]
STONE PRODUCTS



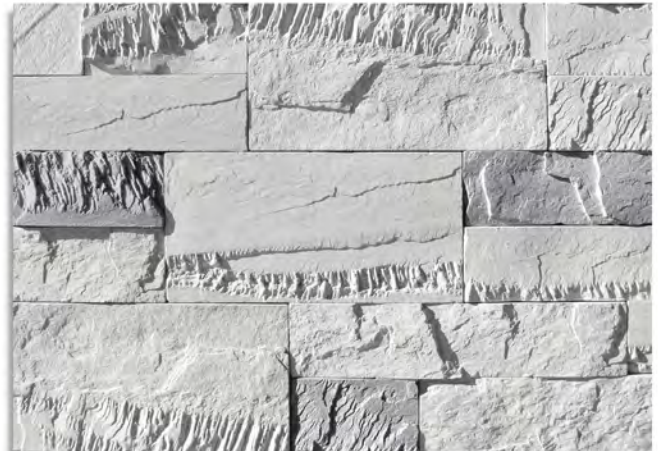
Huron - Honey Ledge



Rocky Mountain - Honey Ledge



Black Forest - Belgian Castle



Glacier - Sawtooth Ledge



Northland - Sawtooth Ledge



Birch Grove - Sawtooth Ledge

Manufactured Stone Veneer



Onyx - Rustic Quickfit



Avalanche - Rustic Quickfit



Arctic - Rustic Quickfit



Warwick - Mountain Quickfit



Polar - Hackett Stone



Fernie - Hackett Stone

Manufactured Stone Veneer



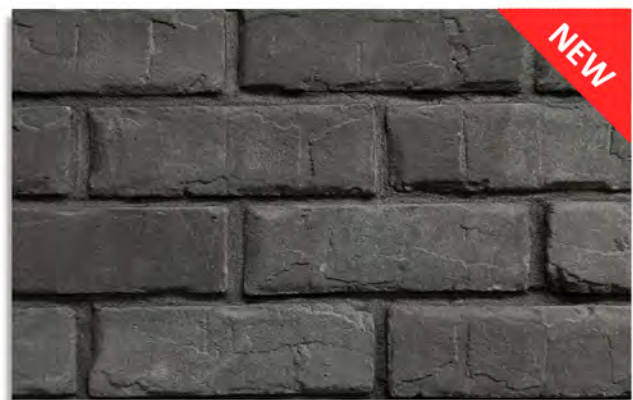
Briarwood - Ledge Stone



Silverhorn - Desert Stone



Brick - Alpine



Brick - Noir



"Protect Your Investment" - Ask us for a quote!

Freeze-thaw cycles in Manitoba and prolonged exposure to precipitation, can cause efflorescence and mineral staining on stone. Sealing helps protect against these and other problems like mold, acid rain, discolouration, and deterioration from water exposure. These issues are not covered under warranty.

Manufactured Stone Veneer

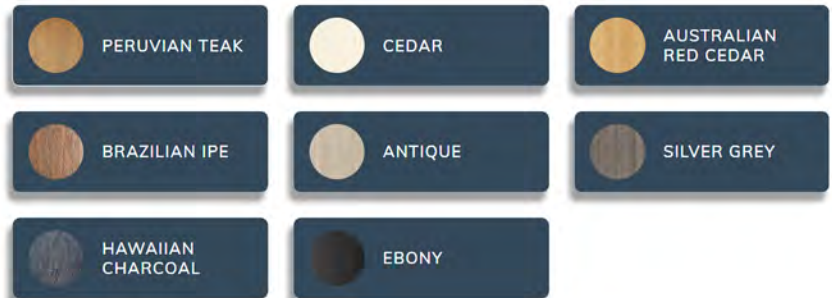
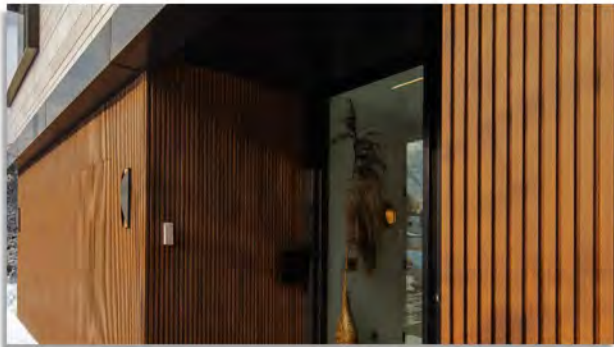


The look of wood without the maintenance

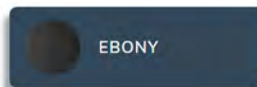
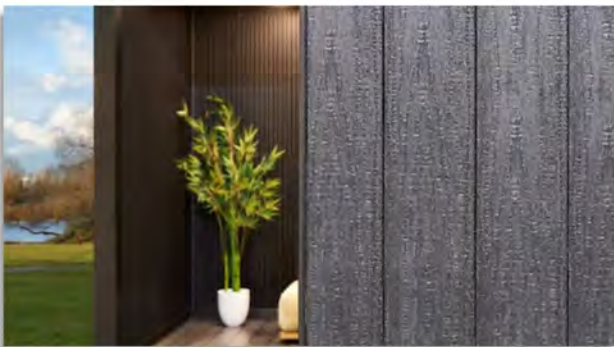
Shiplap Board | Gapped Board | 12' + 16' Lengths



Norwegian Fluted | Belgian Fluted | 12' + 16' Lengths



Shou Sugi Ban Burnt Board | 12' + 16' Lengths



Matchings Trims and Accessories Available



MADE FROM 95% RECYCLED CONTENT AND REAL WOOD FIBRES!



LEED & EPD Certifications

Composite Wood Siding



Mountaineer | Classic | Cable Tie (12" x 72" | 24" x 72" | 36" x 72")



Bespoke Fluted | Board Form | Volcanic (Various Sizes)



Matchings Caulking and Fasteners



Lightweight Concrete Panels

Scan the QR code below to download this brochure on your smart device



www.alsips.com

www.hearthsidefireplaces.ca